

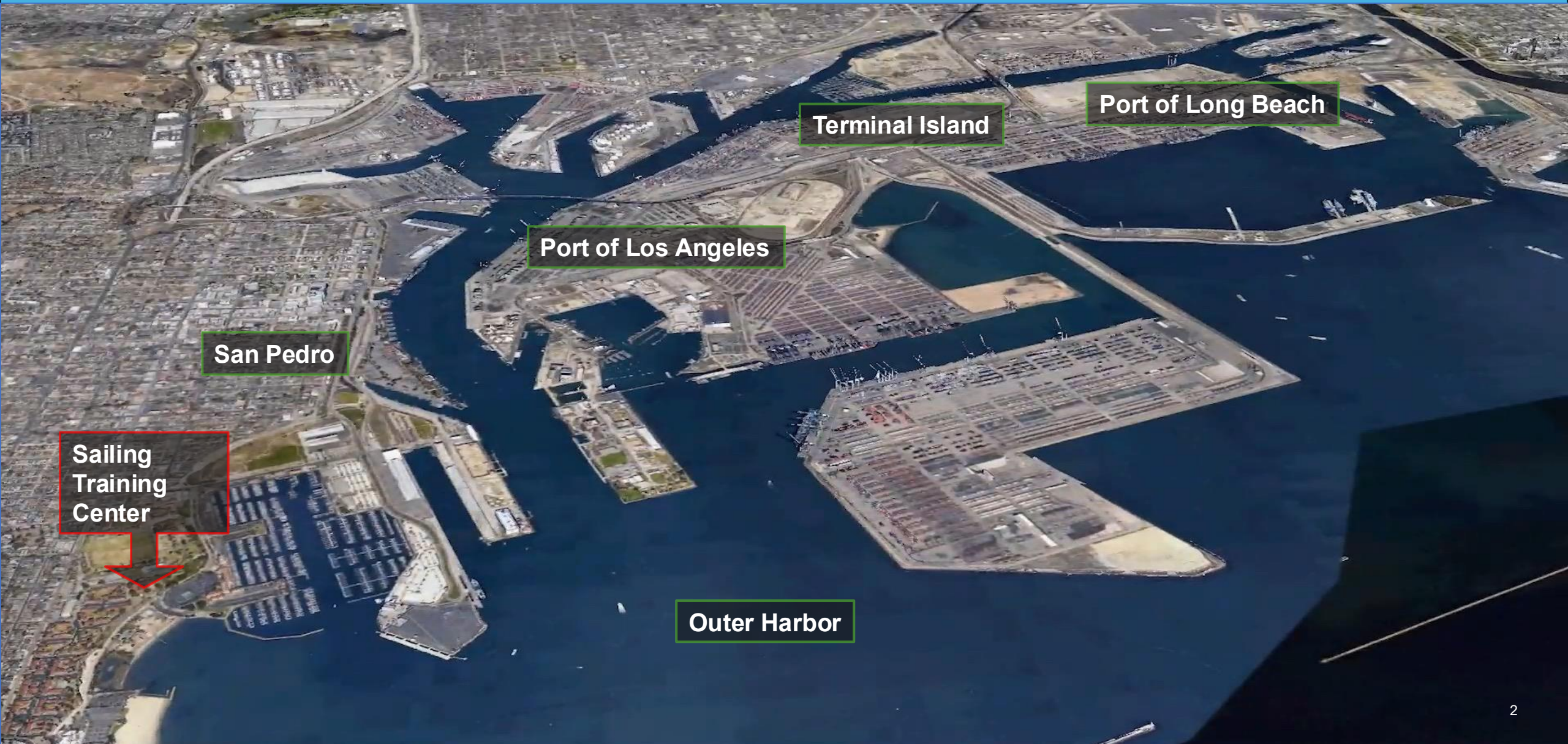
# International Federations Training Center - Sailing - Los Angeles 2028



## PATHWAY TO PODIUM – ABOUT US

The Port of Los Angeles will be one of two venues to host 2028 Olympic Sailing Events. While Belmont Shores, Long Beach, will be the venue for Windsurfing and Kite events, the Port of Los Angeles will be home for world-class sailors and their support teams for the Dinghy, Skiff, and Multihull classes. Pathway to Podium, Inc. (“P2P”) is dedicated to building and managing a first-in-class Sailing Training Center, which will allow competitors from around the world to bring and store their equipment starting in 2026. This will enable athletes to train, practice, and prepare for the Games over the next 2.5 years. Our Mission is to foster excellence in sailing by providing the infrastructure for comprehensive training, community engagement, and supporting sustainable practices.

# THE VENUE



Sailing  
Training  
Center

Terminal Island

Port of Long Beach

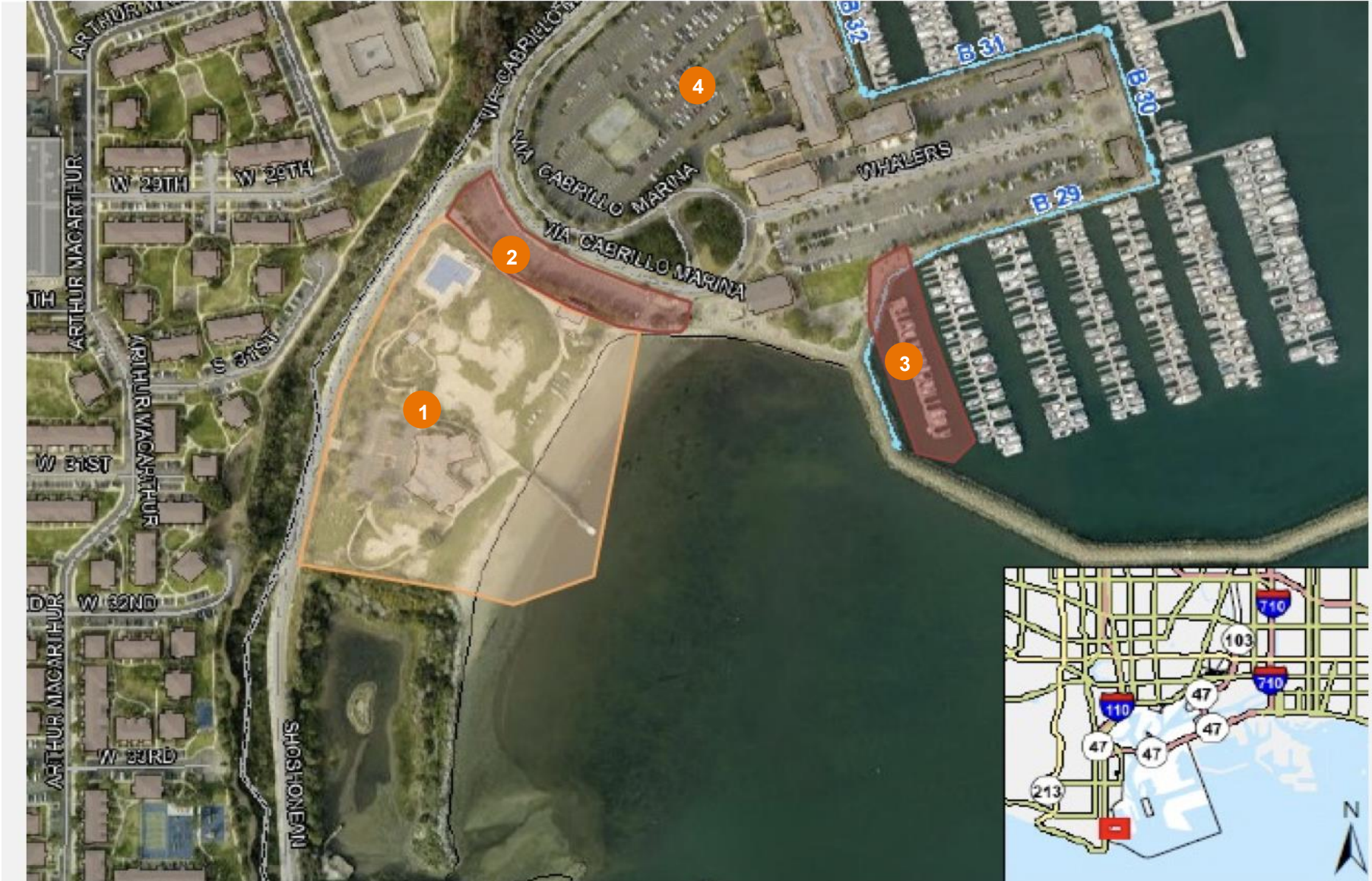
Port of Los Angeles

San Pedro

Outer Harbor

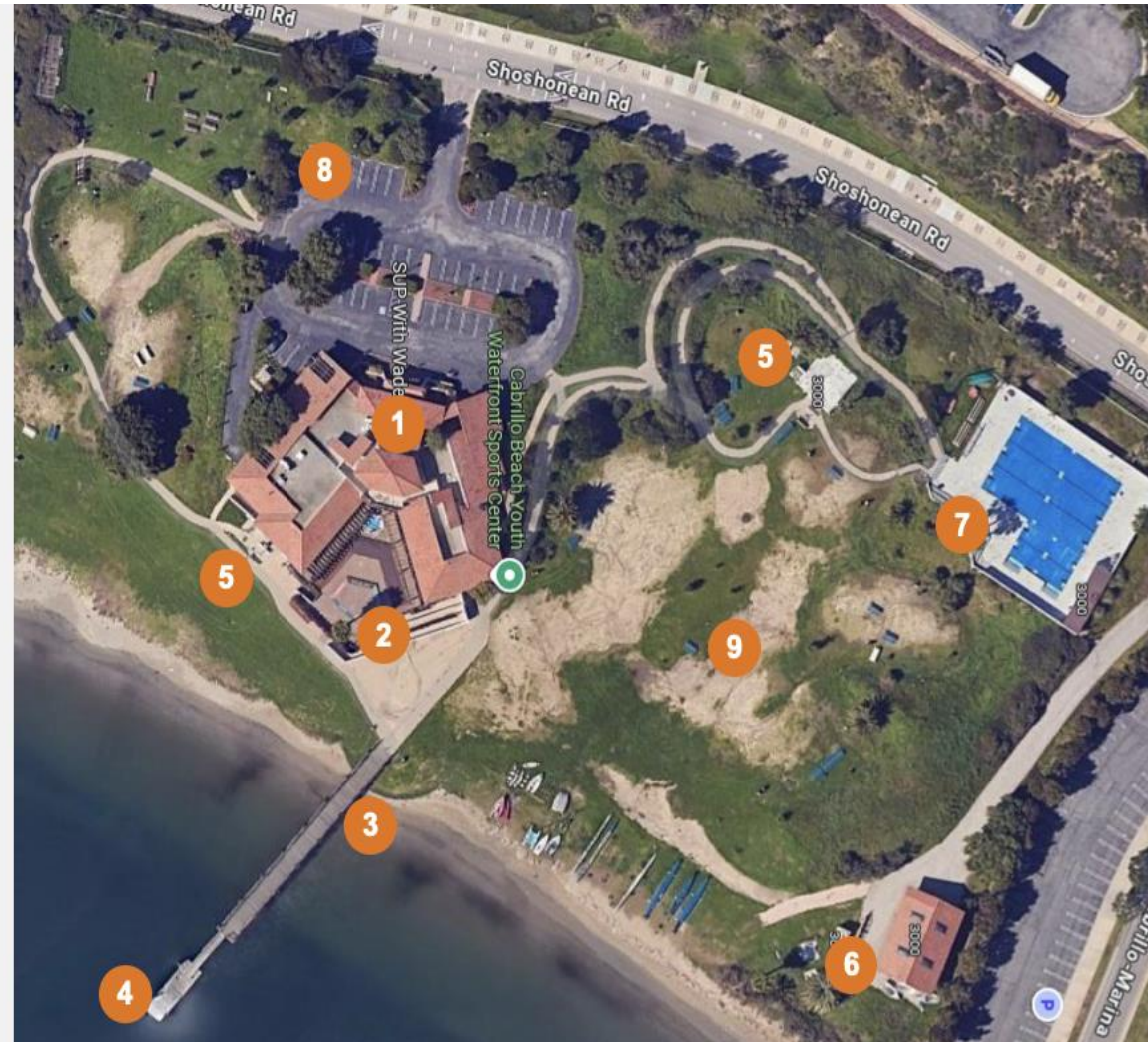
# The Training Center - Overview

- 1 Main Facility  
Boat Storage  
Launch Area
- 2 Team Container  
Storage
- 3 Coach Boat Area
- 4 Double Tree Hotel



# The Training Center - Overview

- 1 Main Entrance to the Center
- 2 Amphitheatre / Deck
- 3 Pier, Ramp
- 4 Floating Dock
- 5 Restroom Facility



- 6 Boat house / storage
- 7 Pool area
- 8 Parking lot
- 9 Boat Storage during practice, waterfront access, launch area

# The Training Center - Overview



## HIGHLIGHTS

- ❖ 25,000 square ft Main Building.
- ❖ Grounds for over 250 boats
- ❖ Swimming pool (\*)
- ❖ Multi Purpose Room
- ❖ Meeting and Conference Rooms
- ❖ Commercial Kitchen
- ❖ Boat House
- ❖ Ramp
- ❖ Floating Dock
- ❖ Event Deck



(\*) – open in Fall 2026

# The Training Center – Reserve your Space



## A. CONTAINER SPACES

The Crescent container lot for containers requiring frequent access is adjacent to the training facility. The Watchorn container lot is available for mainly storage containers.

2026 Pricing:

### Crescent Lot:

- \$4,000.00 per month per container during high season June to September space (8' x 40') or when teams practice in off-season
- \$2,500.00 per month in off-season

### Watchorn Lot:

\$2,000 per container per month

## B. BOAT SPACES

Competitors need to reserve a space for their boat inside the training facility, regardless if the team arrives with or without a container. P2P will assign you a space for the duration of your stay. Lease terms are short term in nature with a minimum of a month.

2026 Pricing:

- ILCA / 470: \$300.00 per space per month or \$15.00 per day (\*)
- 49er / FX: \$450.00 per space per month or \$22.50 per day (\*)
- NACRA: \$600.00 per space per month or \$30.00 per day (\*)

Please contact Kelly Marie at [Kelly\\_Marie@pathway2podium.org](mailto:Kelly_Marie@pathway2podium.org) to secure your container or boat space.

*(\*) for short term stays with a 10-day minimum*

# The Training Center – Reserve your Space



## C. Meeting Rooms and Event Spaces

The Training Facility offers meeting and conference rooms as well as event spaces that teams can reserve on a daily, weekly or monthly basis. Further details will be published soon.

Please contact Kelly Marie at [Kelly\\_Marie@pathway2podium.org](mailto:Kelly_Marie@pathway2podium.org) if you would like to learn more.

## D. Coach Boat Slips

Coach Boat slips will be available in partnership with the Cabrillo Marina. The marina will require proof of insurance and ownership.

You will be entering into a separate marina slip agreement. Contact Rosie Rojas for slip availability and pricing

Rosie Rojas  
[rrjoas@cymcabrillo.com](mailto:rrjoas@cymcabrillo.com) or  
310-732-2252.

# The Training Center – Reserve your Space



## E. Coach Boat Off-Loading

Containers carrying coach boats can be off-loaded at:

Dawn Maldonado  
Cabrillo Dry Boat Storage LLC.  
2293 Miner St.  
San Pedro, CA 90731  
office@cdfs.pro  
(310) 521-0200

Proof of Ownership and Insurance is required. Containers can be accommodated for up to two days. One crane launch is included. Make sure that your bridles are safe and in good working condition.

## F. Arriving Containers

VTI Trucking is our partner to move containers from and to the Port for the Crescent or Watchorn Lots and Cabrillo Dry Boat Storage. VTI will also help with the placement of containers at the Crescent and Watchorn Lots. Please make sure your shipping brokers contract VTI Trucking for the last mile.

Cesar Vasquez  
cesar@vtitrucking.com  
<https://www.vtitrucking.com/>

The Continental Agency is our preferred customs broker.  
Heddy Tang (Continental Agency)  
heddy@cachb.com

# The Training Center – CONTACT



**We are excited to welcome you in Los Angeles -  
Your P2P Team !!**

## **Board of Directors:**

**Kelly Marie,  
P2P President:**

[Kelly\\_Marie@pathway2podium.org](mailto:Kelly_Marie@pathway2podium.org)

**Bill Shopp**

**Ken Corry**

**Mike Lansing**

**Jack Baric**

**Richard Maire**

**Robert Kraak**